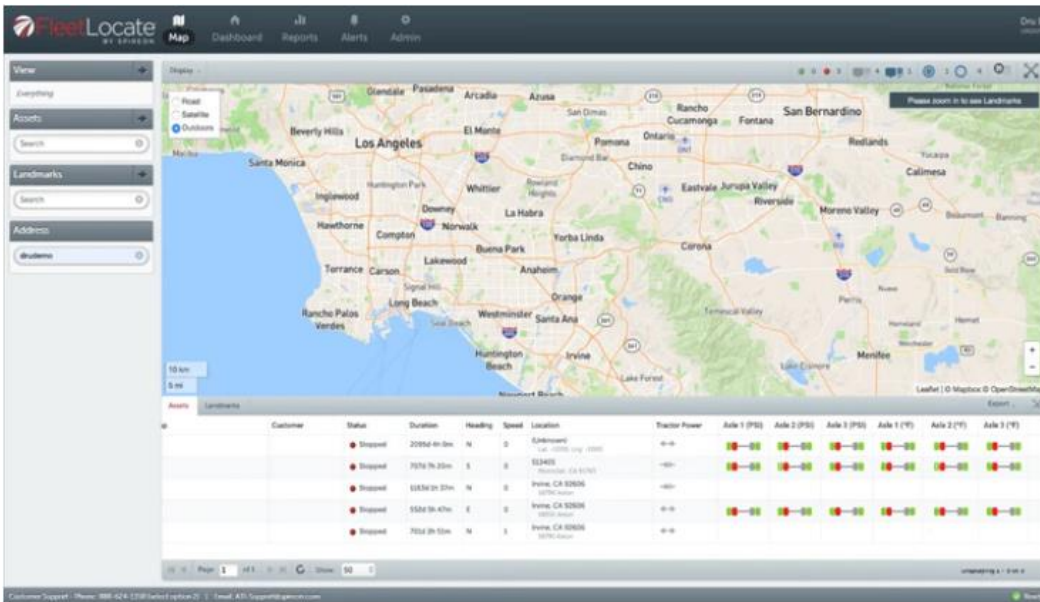




Spireon launches integration with P.S.I. TireView

The collaboration provides holistic tire health management through FleetLocate for shared customers.

Feb 26, 2020



Spireon, a vehicle intelligence company, launched an integration of its FleetLocate trailer management solution with the Pressure Systems International (P.S.I.) TireView Tire Pressure Monitoring System (TPMS). Timed with American Trucking Associations’ (ATA) Technology & Maintenance Council (TMC), the partnership builds upon Spireon’s Intelligent Trailer Management (ITM) platform to equip customers with actionable intelligence needed to maximize ROI.

“Tire pressure monitoring systems help carriers extend tire life, reduce uneven wear from under-inflation, decrease maintenance costs and prevent tire-related CSA violations,” said Roni Taylor, senior vice president of strategy and business development at Spireon. “Spireon’s integration with P.S.I. TireView TPMS is an important addition to the ITM platform as it gives customers a comprehensive view of tire health where they manage their entire trailer ecosystem—FleetLocate.”

The FleetLocate/TireView TPMS integration makes it easier for carriers to:

- See tire pressure, temperature and status for all system-equipped trailers
- Identify leakage and get ahead of repairs before a failure
- Create real-time alerts to provide notification of issues

“It’s been great to work side-by-side with Spireon’s product management and engineering teams to bring this seamless integration to market,” said Jim Sharkey, vice president of global sales and marketing for P.S.I. “Our second integration with Spireon, now you can tie our ATIS in with TPMS, all within FleetLocate.”

https://www.vehicleservicepros.com/industry-news/press-release/21126865/spireon-spireon-launches-integration-with-psi-tireview?utm_source=FMS+Newsletter&utm_medium=email&utm_campaign=VSP200226005&o_eid=2005F1552889C9W&rdx.ident%5Bpull%5D=omeda%7C2005F1552889C9W